



97-06 JEEP TJ/LJ LONG ARM UPGRADE KIT

Thank you for choosing Rough Country for your suspension needs.

This kit is an upgrade kit only. This kit includes frame mounting points and adjustable long arms for the front and rear.

Rough Country recommends a certified technician installs this system. In addition to these instructions, professional knowledge of disassemble/reassembly procedures as well as post installation checks must be known. Attempts to install this system without this knowledge and expertise may jeopardize the integrity and/or operating safety of the vehicle.

Please read all the instructions before beginning the installation. Check the kit hardware against the kit contents. Be sure you have all the needed parts and understand where they go. Also please review the tools needed list and make sure you have needed tools. If you have any questions please call us at 800-222-7023.

PRODUCT USE INFORMATION

As a general rule, the taller a vehicle is the easier it will roll. We strongly recommend seat belts and shoulder harnesses should be worn at all times. Avoid situations where a side rollover may occur.

Braking performance and capabilities are decreased when significantly larger/heavier tires and wheels are used. Take this into consideration while driving. Also, speedometer recalibration is necessary when larger tires are installed.

Do not add, alter, or fabricate any factory or after-market parts which increase vehicle height over the intended height of the Rough Country product purchased. Mixing component brands, lifts, voids all warranties. Rough Country makes no claims regarding lifting devices and excludes any and all implied claims. We will not be responsible for any product that is altered.

- *With the installation of this kit and larger tires it is highly recommended that an aftermarket stabilizer be added.*
- *A drive-shaft/SYE combination is highly recommended for the 4' kit and a necessity on the 6" kit to correct rear driveshaft angles and prevent vibration.*
- *Additionally, the exhaust system must be modified by an exhaust specialist to clear all components.*
- *On Rubicon models the air compressor for the air lockers on the frame by the rear of the skid plate will have to be relocated. Refer to installation instructions for detail.*

NOTICE TO DEALER AND VEHICLE OWNER

Any vehicle equipped with any Rough country product must have the "Warning to Driver" decal installed on the sun visor or dash. The decal is to act as a constant reminder for whoever is operating the vehicle of its unique handling characteristics. **INSTALLING DEALER**—It is your responsibility to install the warning decal and to forward these installation instructions on to the vehicle owner for review and to be kept in the vehicle for its service life.

TOOLS NEEDED:

- Spring Compressor
- Silicone spray
- Drill assortment
- Hammer
- Combination wrenches
- Floor jacks
- Wheel chocks
- 1/2" drill motor
- T55 torx bit
- 11/32" Drill bit
- 17/32" Drill bit
- Torque wrench
- 1/2 drive ratchet and sockets
- Allen wrenches
- Large "C" clamps and /or bench vise
- Heavy duty jack stands
- Safety glasses
- Anti-seize compound

TORQUE SPECS:

Size	Grade 5	Grade 8
5/16"	15 ft/lbs	20 ft/lbs
7/16"	45 ft/lbs	60 ft/lbs
1/2"	65 ft/lbs	90 ft/lbs
9/16"	95 ft/lbs	130 ft/lbs
5/8"	135 ft/lbs	175 ft/lbs

KIT CONTENTS

1663Box1:

- 1-Dr Side Control Arm Mount (A)
- 1-Pass Side Control Arm Mount (B)
- 1-Rear Track Bar Bracket (C)
- 2-Front Upper Adj Arms (D)
- 2-Large Arm Ends
- 2-Small Arm Ends

1663Box2:

- 2-Front Lower Adj Arms (E)
- 2-Rear Lower Adj Arms (F)
- 2-Rear Upper Adj Arms (G)
- 2-Large Arm Ends
- 2-Small Arm Ends

Fastener Breakdown:

1663Bag1:

For Control Arm Mounts:

- 4-1/2" x 4" Bolts
- 8-1/2" Washers
- 4-1/2" Lock nuts

For Transfer Case Skid Plate

- 6-9/16 x 4 1/2" Bolts (97-02)

OR 6-12mm x 65mm Bolts (03-06)

- 6-Flat Washers

For Front Lower Control Arms

- 2-9/16" x 4" Bolts
- 4-9/16" Flat Washers
- 2-9/16" Lock Nuts

For Front Upper Control Arms

- 2-10mm x 80mm Bolts
- 4-10mm Flat Washer
- 2-10mm Lock Nuts

For Rear Lower Control Arm:

- 2-9/16" x 7" Bolts
- 4-9/16" Flat Washers
- 2-9/16" Lock Nuts

For Rear Track Bar Bracket

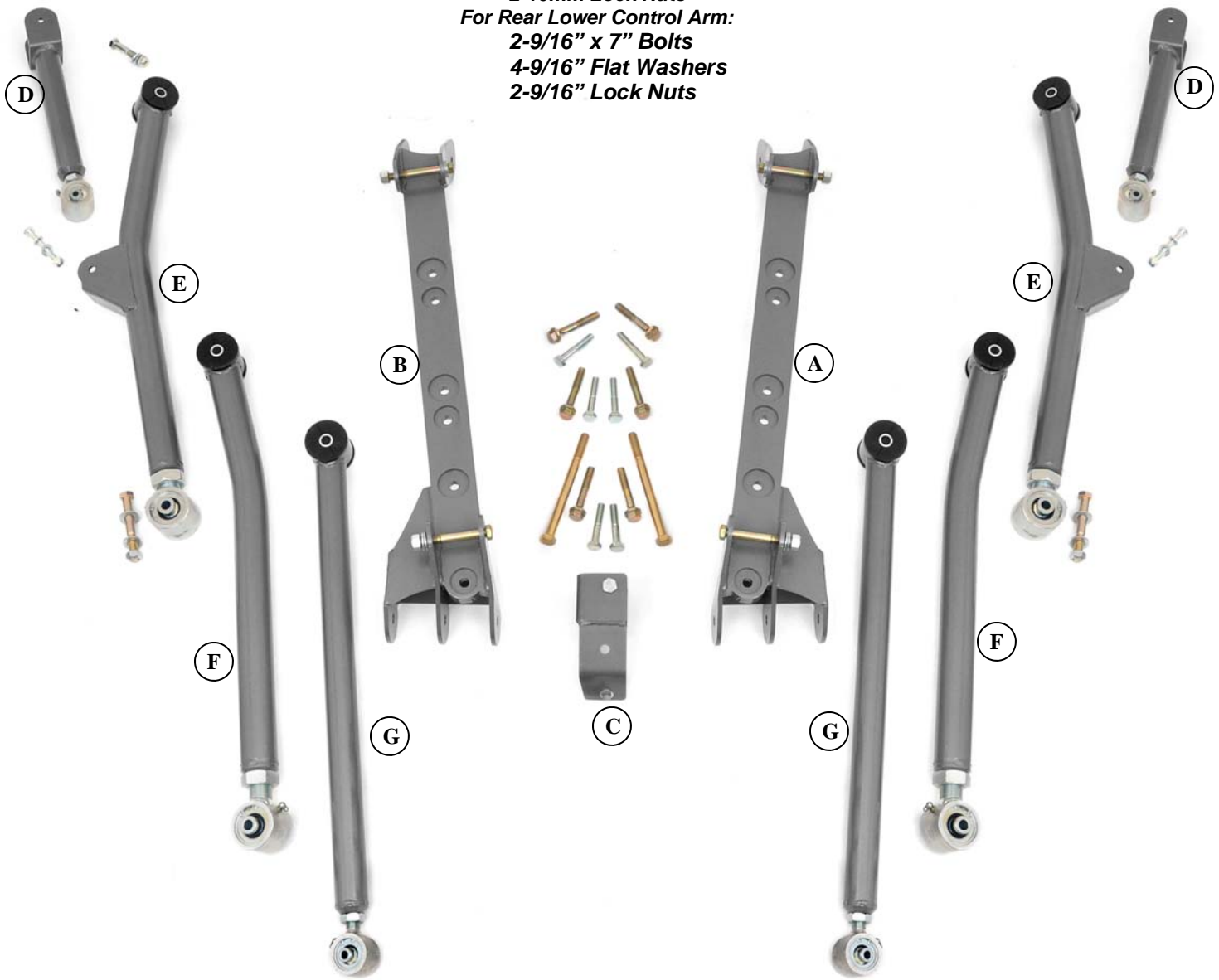
- 2-5/16" x 1" Bolt
- 4-5/16" Flat Washers
- 4-5/16" Lock Nuts
- 1-12mm x 65mm Bolt
- 1-12mm Flange Lock
- 1-Crush Sleeve

For use with Rubicon Models:

- For Compressor Bracket
- 4-5/16" x 1" Bolts
- 4-5/16" Lock Nuts
- 8-5/16" Flat Washers

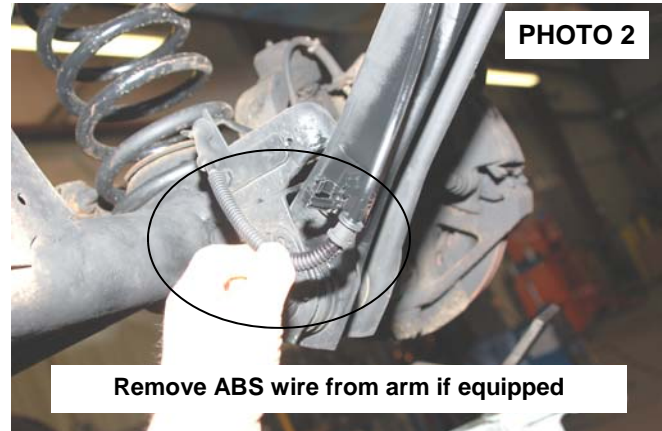
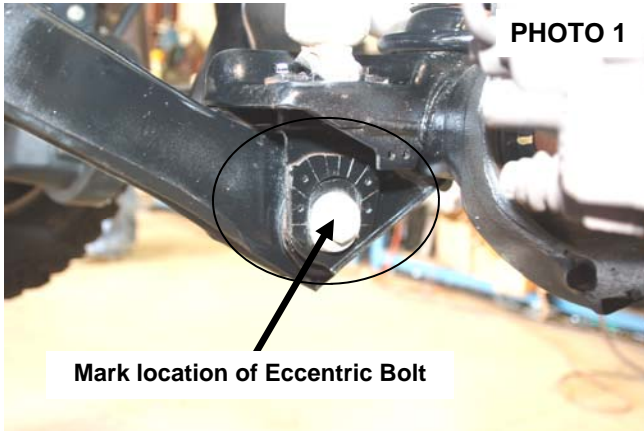
1663Bag2

- 12-Control Arm Bushings
- 6- Control Arm Sleeves
- 8-Grease Fittings

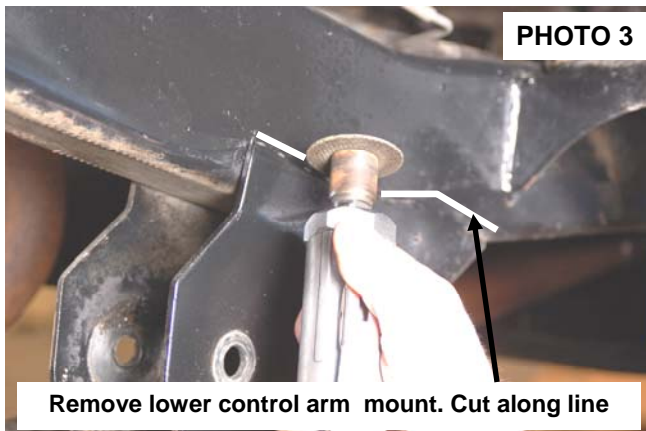


FRONT INSTALLATION

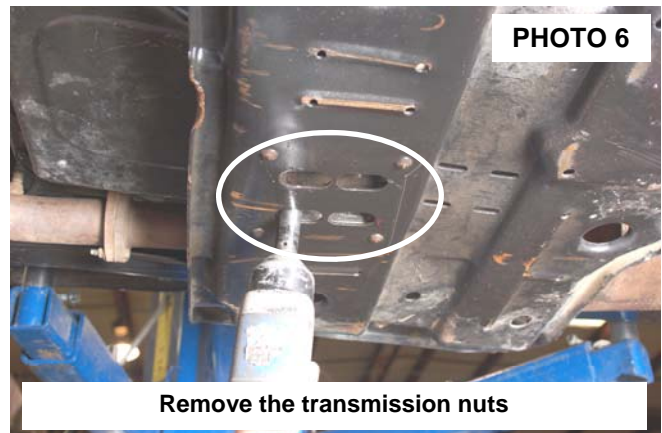
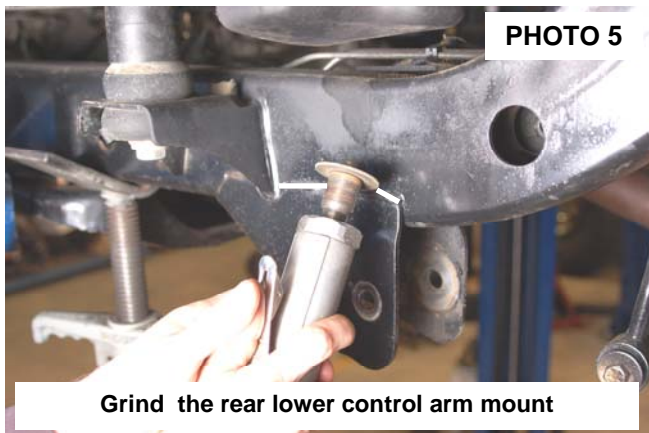
1. Place the vehicle on a level surface. The vehicle will need to be placed on jack stands front and rear to install the long arm kit.
2. Remove the front tires and wheels.
3. From inside the engine compartment, remove the upper stud nut, retainer and grommet from both of the front shocks using a 15mm socket.
4. Remove both of the front sway bar end links using a 15mm wrench for the upper and a 18mm wrench for the lower. Retain lower link hardware for re-use.
5. Place a floor jack underneath the axle for support and complete the removal of the front shock absorbers from the lower mount using a 13mm Socket. Retain the stock lower hardware for reuse.
6. Do not reuse the original factory shocks.
7. If your axle is equipped, mark the position of the lower control arm cam bolt and axle brackets for installation reference. **See Photo 1.** If equipped with ABS brakes, remove the sensor wires and clamps for the inside of the lower arms and save clamps for re-use. **See Photo 2.**



8. Remove the track rod from the axle and from the frame using a 15mm (axle) & 18mm wrench (frame). Retain the axle hardware for reuse.
9. Remove the coil spring clip located on the bottom coil seat on the driver side of the vehicle using a 13mm socket. Retain the clip and hardware for reuse.
10. Remove the brake caliper from the axle using a 13mm socket and secure out of harms way.
11. Lower the axle and remove the coil spring. A coil spring or strut compressor may be needed to remove the stock coil spring.
12. Support the front axle and remove the stock lower control arm by removing the nut, cam, and cam bolt (if equipped) from the axle bracket and then removing the nut and bolt from the frame bracket doing one side at a time using a 21mm socket & wrench. Retain the stock hardware.
13. Remove the upper arm from the mount using a 15mm wrench. Do not retain stock hardware.
14. Cut the stock lower control arm mounts from the frame as shown in **Photo 3** by cutting the weld that secures the bracket to the frame using a cutting wheel or similar cutting tool. Take care not to cut in to the frame rail.
15. After the bracket is removed, grind the surface smooth as shown in **Photo 4** and paint the area to prevent rusting



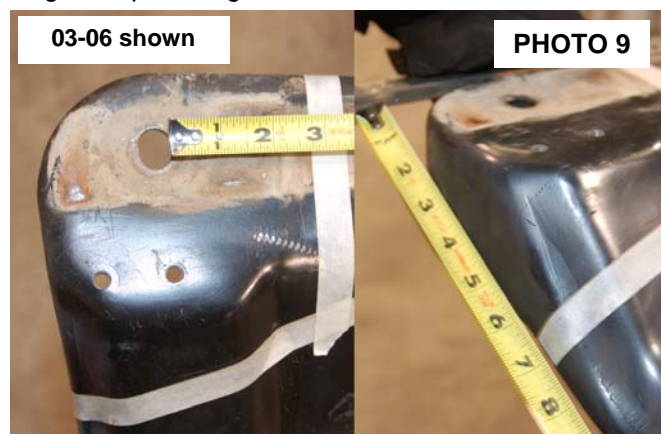
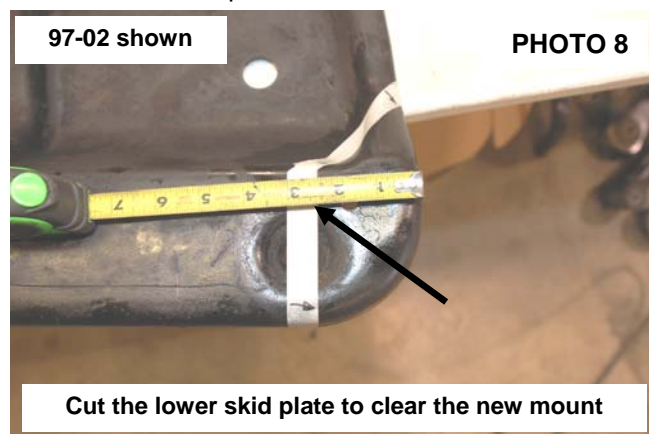
16. On the rear of the vehicle, remove the stock shocks from the vehicle using a 13mm socket on the upper and a 18mm socket / wrench on the lower mount. Retain hardware for reuse.
17. Remove the rear track rod from the axle using a T55 Torx bit and a 15mm & 18mm wrench on the frame. Retain the hardware for reuse.
18. Lower the axle and remove the coil springs. Remove the rear sway bar links using a 15mm socket / wrench. Retain the upper hardware for reuse
19. Support the rear axle. Remove the brake line from the upper control arms using a 13mm wrench. Remove the lower control arms using a 21mm wrench & socket. Retain the factory axle hardware.
20. Remove the upper control arms from the rear axle using a 15mm socket / wrench. Retain axle hardware for reuse.
21. Cut the stock rear lower control arm mounts from the frame as shown in **Photo 5** by cutting the welds that secures the bracket to the frame using a cutting wheel or similar cutting tool. Take care not to cut in to the frame rail. Paint the exposed surface to prevent rusting.
22. Remove the transmission nuts as shown in **Photo 6** with a 13mm socket to allow the skid plate to be removed. Retain the factory hardware. **On Rubicon models, remove the compressor bracket from the skid plate using a 13mm wrench. Retain the hardware for reuse. Removal of the compressor from the vehicle is recommended to ease in installation.**



23. Support the factory skid plate and remove the 6 bolts (3each side) that secure it to the frame using a 3/4" socket. Retain the factory hardware. **See Photo 7.** If equipped with a forward skid plate (present on most auto transmission models) remove at this time using a 13mm & 3/4" wrench. This skid plate will not be reused. Lower the main skid plate and remove for trimming. **Make sure stock lines are not pulled or overextended.**



24. **On 97-02 models** , measure back 2 3/8" on the drivers side only rear corner of the skid plate and mark with tape. **See Photo 8.** Cut using a reciprocating saw. This done to allow clearance for the new lower control arm mount. Grind the edges smooth. **On 03-06 models** measure back 2 3/4" from hole edge as shown on both sides of the skid plate and 6 1/2 from the sides and cut using a reciprocating saw. **See Photo 9.**



25. Align the holes in the frame with the new control arm bracket and install the factory skid plate bolts. Clamp in place using a large c-clamp. **See Photo 10.**
26. Using the new bracket as a guide, drill using a 17/32" drill bit through the inner and outer frame rail. **See Photo 11.** NOTE: The drill must be kept level for the frame holes to align with the new bracket. **Note: Use caution when drilling the frame rail to avoid any lines on the inside of the frame rail, including fuel lines and brake lines.**

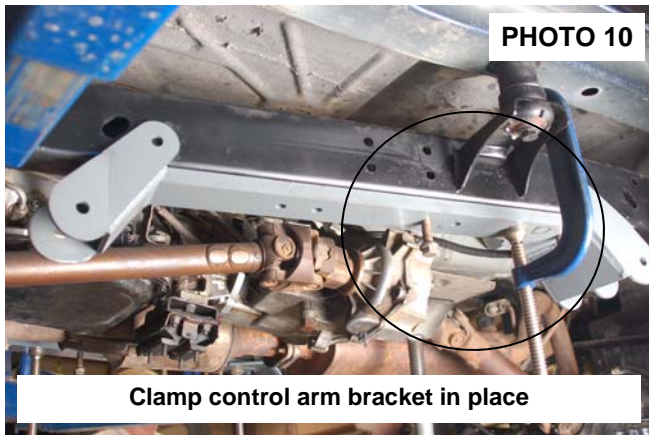


PHOTO 10

Clamp control arm bracket in place

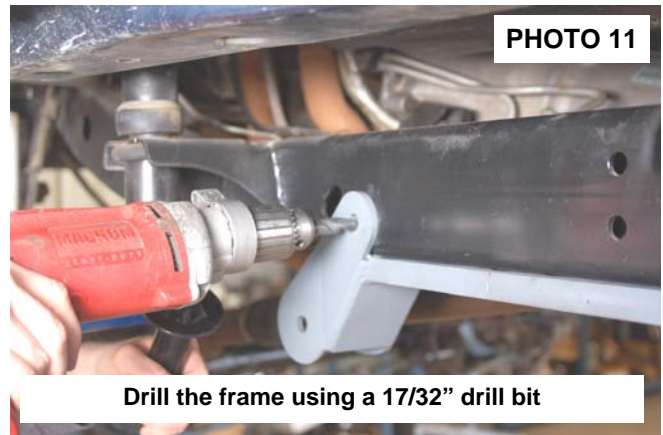


PHOTO 11

Drill the frame using a 17/32" drill bit

27. Install the supplied 1/2" x 4" bolts, washers and nuts as shown in **Photo 12** through the frame rail and tighten using a 3/4" wrench. Repeat steps 29-31 for the opposite side.
28. On Rubicon Models, the compressor bracket will be installed on the rear lower control arm bolt as shown in **Photo 13**. Temporarily insert 9/16" x 7" bolt at this time and continue to next step.

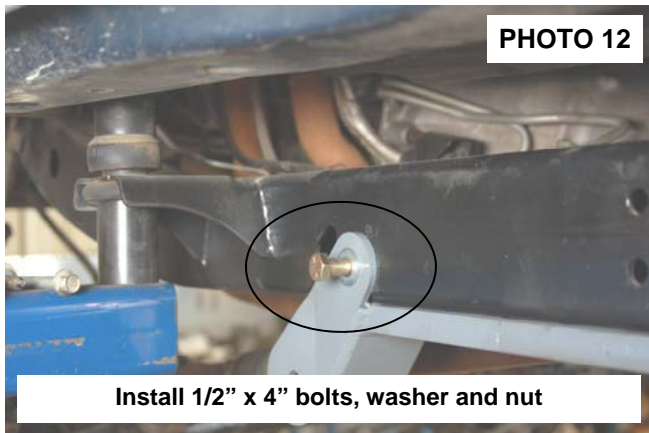


PHOTO 12

Install 1/2" x 4" bolts, washer and nut

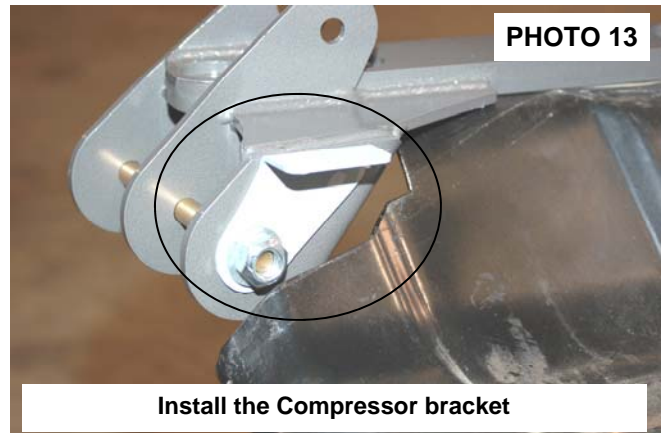


PHOTO 13

Install the Compressor bracket

29. Using the stock compressor bracket as a guide, align the hole in the frame mount bracket and drill two holes using 11/32" drill bit and secure to the skid plate using the supplied 5/16" x 1" bolts, washer and nuts. The compressor will be secured to the new bracket with the supplied 5/16" x 1" bolts, washer and nuts. **See Photo 14.**
30. Reinstall the skid plate with the supplied 1/2" x 4 1/2" for 97-02 Models and 12mm x 65mm bolts & washers for 03 and up models. Tighten the 1/2" bolts using a 3/4" socket and the 12mm using a 19mm socket **See Photo 15.**

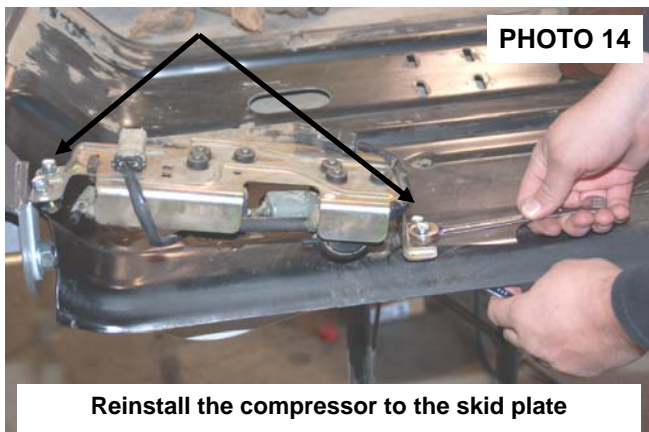


PHOTO 14

Reinstall the compressor to the skid plate

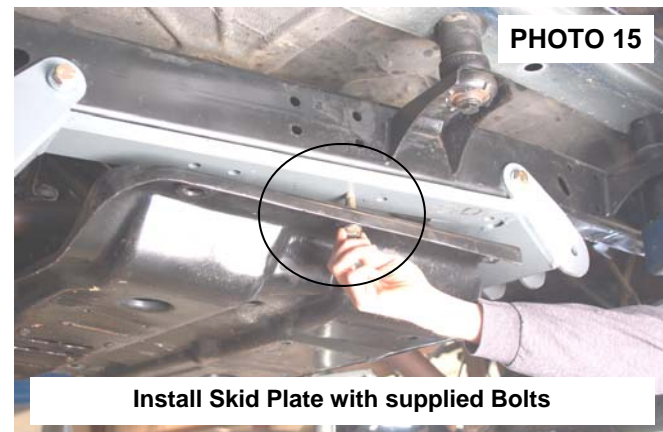


PHOTO 15

Install Skid Plate with supplied Bolts

31. Locate the front lower control arm bushings and lubricate them with a lithium grease. Assemble the bushings and sleeves in the lower control arm. Adjust the arm to a length of **29 3/4"** from center of bushing to center of bushing. Tighten jam nut using an adjustable wrench.
32. Install the new front lower control arm in the new mount with the supplied 9/16" x 4" bolts, washers / nuts making sure the joint is centered. Do not tighten at this time. **See Photo 16.**
33. Install the lower control arm on the axle with the factory hardware. **See Photo 17.** Do not tighten at this time.

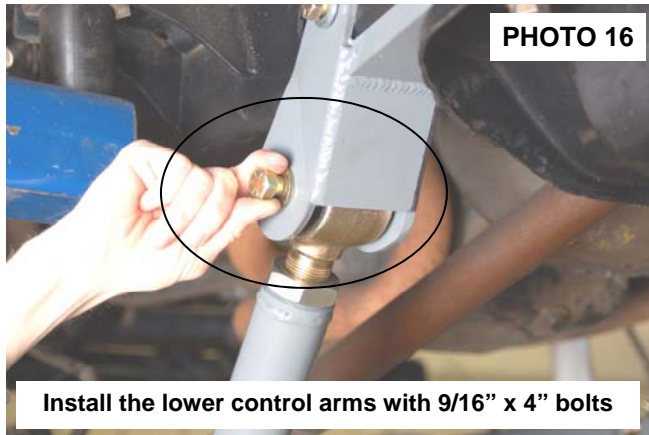


PHOTO 16

Install the lower control arms with 9/16" x 4" bolts

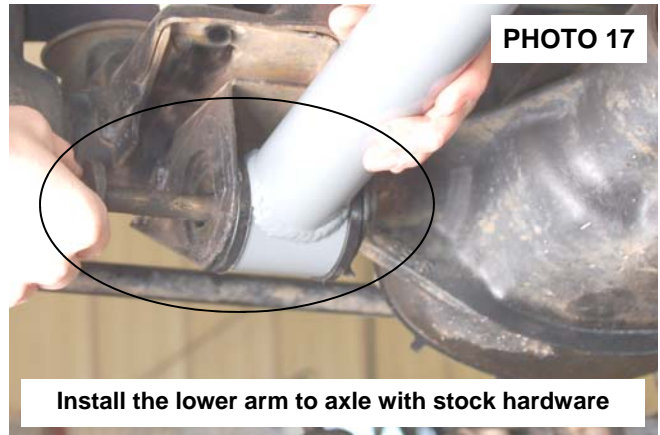


PHOTO 17

Install the lower arm to axle with stock hardware

34. Assemble the front upper control arm and adjust to a length of **15 1/4"** from center of hole to center of bushing. Install on the new lower control arm with the supplied 10mm x 80mm bolt, washers / nuts. **See Photo 18.** Do not tighten at this time. Tighten jam nut using an adjustable wrench.
35. Install the new upper arm to the axle using the supplied 10mm x 80mm bolt, washers & nuts. Do not tighten at this time. **See Photo 19.** **If installing on a vehicle equipped with a Dana 44 front axle, be sure to install the arm on the drivers side with the cut out over the differential to allow clearance. See Photo 19.**

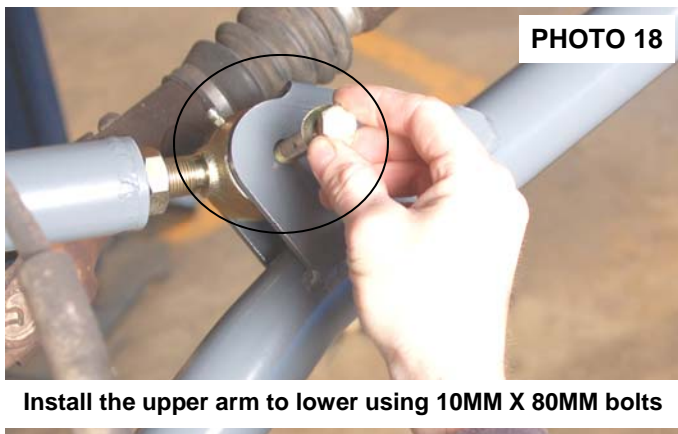


PHOTO 18

Install the upper arm to lower using 10MM X 80MM bolts

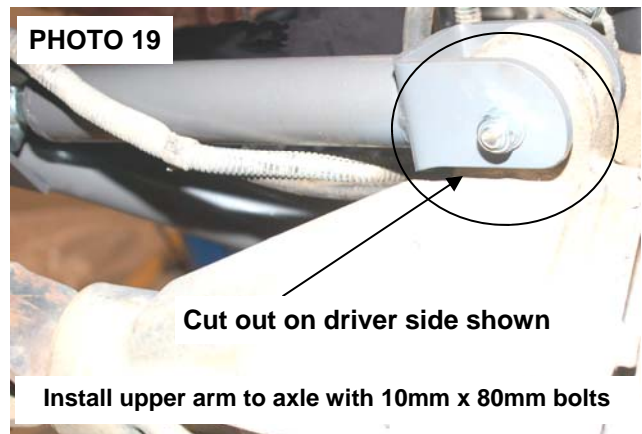


PHOTO 19

Cut out on driver side shown

Install upper arm to axle with 10mm x 80mm bolts

36. Moving to the rear of the Jeep, Grease the supplied bushings with a lithium grease and install the bushings in the rear upper and lower control arms. Adjust the lower control arms to **27 3/4"** and the upper control arms to **29"** long. **On LJ Jeeps:** Adjust the lower arms to **38 3/4"** and adjust the upper control arms to **39"**.
37. Install the new rear lower & upper control arm in the new mount with the supplied 9/16" x 7" bolts. Washers / nuts making sure the lower arm joint is centered in the mount. Do not tighten at this time. **See Photo 20.**
38. *If installing on a Rubicon Model,* reinstall the compressor bracket on the bolt as shown in Step 28.

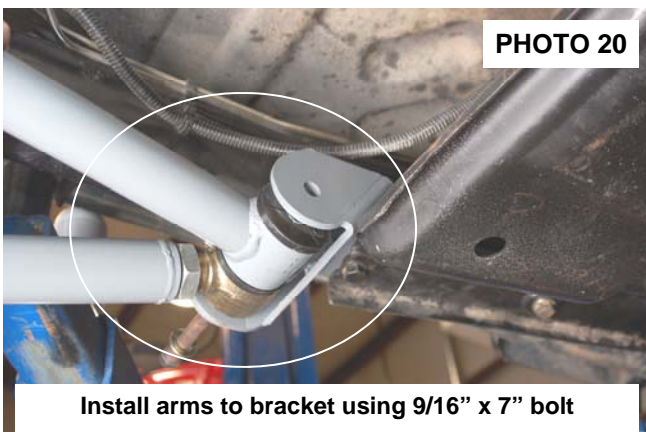


PHOTO 20

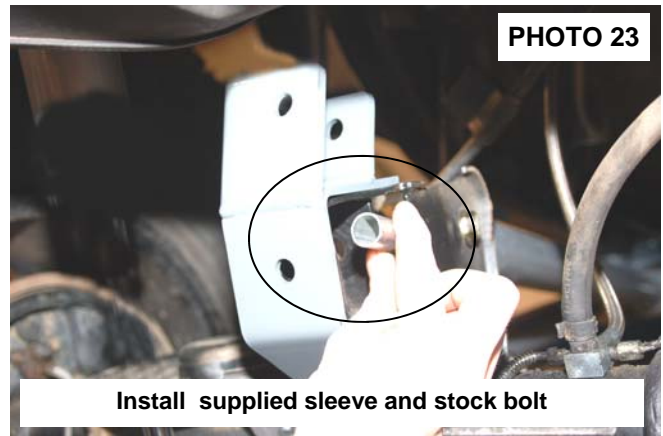
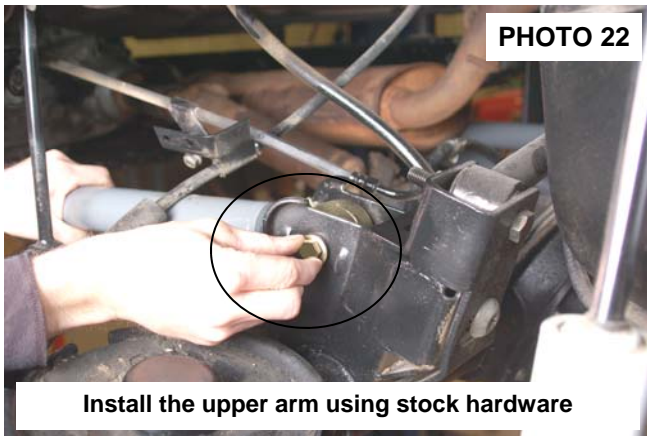
Install arms to bracket using 9/16" x 7" bolt



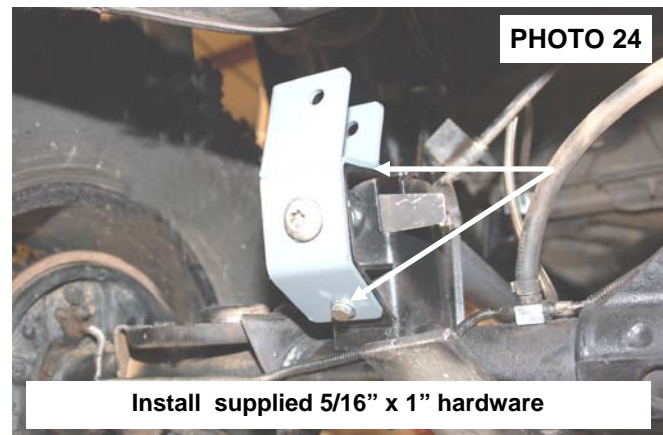
PHOTO 21

Install the arm to axle with stock hardware

39. Install the upper arm on the axle using the stock hardware. Do not tighten at this time. **See Photo 22.**
40. Locate the new track rod bracket and install on the rear axle mount as shown in **Photo 23** with the supplied crush sleeve using the stock bolt and flag nut. Tighten using a T55 torque head bit.



41. Install the supplied 5/16" x 1" bolts, washers & nuts in the bracket as shown in **Photo 24**. Tighten using a 13mm wrench.
42. The track rod will be tightened on both ends after the vehicle has been lowered to the ground and is supporting its own weight. This is done to ensure the axle is centered under the body.
43. Install the coil springs making sure the rubber damper is positioned in the upper mount. It may be necessary to use a coil spring or strut compressor to install the new coil springs.
44. Install the wheels and tires and tighten the lug nuts to the factory specifications using crossing pattern (80-110 ft. lbs).
45. Remove the jack stands and lower the vehicle to the ground.
46. On the front lower control arms; align the reference marks on the adjustment cams and lower arm axle brackets and tighten to 85 ft. lbs using a 21 socket & wrench. Tighten the upper using a 15mm socket & wrench. Repeat for the rear of the vehicle.
47. On the rear, make sure the body is centered over the axle. It is important to center the vehicle over the axle to ensure proper tracking and alignment.



POST INSTALLATION

1. Rotate driveshaft and check for interference at differential yoke and u-joint. If necessary, lightly dress casting(s) and/or U-joint tabs in order to eliminate binding.
2. Have a qualified alignment center realign front end to factory specs. As a general rule you set caster to the minimum of the factory spec and set toe-in to the maximum.
3. Install Warning to Driver decal on sun visor.
4. Adjust headlights to proper settings
5. Grease all control arms and periodically grease as required.
6. All components must be retightened after 500 miles, and every three thousand miles after installation.
7. The factory exhaust must be modified / rerouted to have adequate clearance on all fixed and moving components.
8. A CV type driveshaft and slip yoke is recommended for the 4" kit and a necessity for the 6" kit to avoid drive shaft vibration.

TROUBLESHOOTING TIPS

Problem: Driveline Vibrations

Possible Solution: Check all u-joints to insure that there is no wear on the existing hardware caps. Even a new vehicle can cause vibrations in the angle on the U-joint is changed after being run for even a short period of time.

Possible Solution: The transfer case drop brackets must be installed with the 4" lift, if you do not plan to run a slip yoke eliminator.

Problem: Your Jeep does not steer, or track correctly.

Possible Solution: The steering geometry is corrected when the pitman arm is installed. If the steering is short or offset after installing the lift with the pitman arm, the alignment shop should adjust the linkages on the front axle to line the steering geometry back.

Possible Solution: If you are experiencing bump steer or axle float after the alignment, you will need to check the track bar to ensure that the tie rod end is not worn or damaged. This will allow the axle to float from side to side.

Problem: You experience "High Speed Wobble" after hitting bump at 35-40mph.

Possible Solution: "Death wobble" is usually a combination of items and typically there is not one easy fix. We recommend you follow these steps when trying to identify source. Start by looking for any loose movement in the steering. Watch the tie-rod ends where they connect to the steering knuckle arms. Watch the drag link and the ends. Watch the track bar—it should remain tight without side to side movement when dry turning. Make sure your tires are balanced—we recommend they be "road force" balanced. Lack of proper caster angles may be the problem. Last but not least is the steering stabilizer. A new stabilizer will not fix the problem, but a worn out one will make the situation worse.

Thank you for choosing Rough Country for your suspension needs.

