



JEEP JK REAR LOWER CONTROL ARM SKID PLATE

Thank you for choosing Rough Country for your suspension needs.

Rough Country recommends a certified technician install this system. In addition to these instructions, professional knowledge of disassemble/reassembly procedures as well as post installation checks must be known. Attempts to install this system without this knowledge and expertise may jeopardize the integrity and/or operating safety of the vehicle.

Please read instructions before beginning installation. Check the kit hardware against the parts list. Be sure you have all needed parts and know where they go. Also please review tools needed list and make sure you have needed tools.

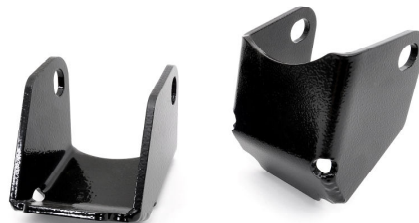
PRODUCT USE INFORMATION

Rough Country makes no claims regarding lifting devices and excludes any and all implied claims. We will not be responsible for any product that is altered.

If question exist we will be happy to answer any questions concerning the design, function, and correct use of our products by calling 1-800-222-7023.

This JK rear lower control arm skid plate is designed to work with any JK with stock suspension, a short arm lift kit, or a Rough Country long-arm lift kit. This is a bolt on skid that helps protect the control arm and adds strength to the control arm pocket.

Kit Picture



Install Instructions

1. Remove the rear passenger side control arm bolt holding the lower control arm to the axle with a 21mm wrench.
2. Hold the skid against the outside of the control arm pocket and insert the factory bolt through the skid and lower control arm. **See Photo 1.**
3. Use a 21mm wrench to tighten the factory bolt. **See Photo 2.**
4. Repeat on driver side.



Photo 1



Photo 2