



## JEEP JK HEAVY DUTY CROSSMEMBER

Thank you for choosing Rough Country for your suspension needs.

Rough Country recommends a certified technician install this system. In addition to these instructions, professional knowledge of disassemble/reassembly procedures as well as post installation checks must be known. Attempts to install this system without this knowledge and expertise may jeopardize the integrity and/or operating safety of the vehicle.

Please read instructions before beginning installation. Check the kit hardware against the parts list. Be sure you have all needed parts and know where they go. Also please review tools needed list and make sure you have needed tools.

### PRODUCT USE INFORMATION

Rough Country makes no claims regarding lifting devices and excludes any and all implied claims. We will not be responsible for any product that is altered.

If question exist we will be happy to answer any questions concerning the design, function, and correct use of our products by calling 1-800-222-7023.

This JK heavy duty cross member is designed to work with any JK with stock suspension, a short arm lift kit. This is a bolt on cross member that helps protect the transmission and strengthens the frame rails.

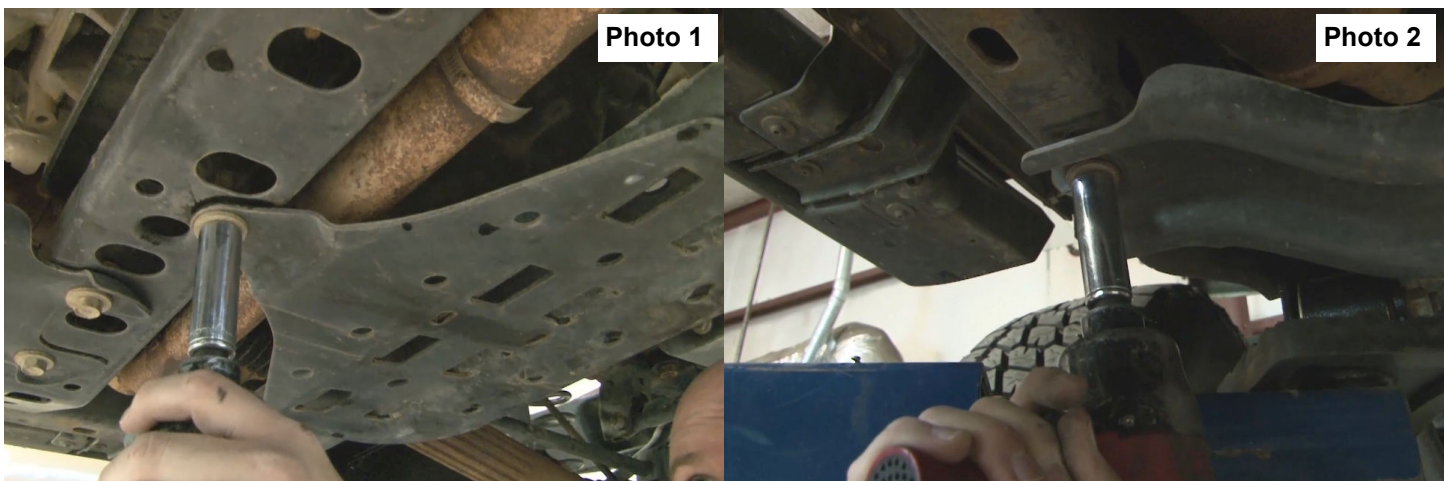
### Kit Picture

#### Tools Needed

16mm Socket  
18mm Socket/Wrench  
Jack

### Install Instructions

1. Park the jeep on a flat level surface.
2. Using a 18mm socket remove the three bolts holding on the front skid plate. **See Photo 1 & 2.**



3. Next remove the four bolts holding on the transfer case skid plate with a 18mm socket. **See Photo 3.**
4. Remove the nuts holding the transmission mount to the cross member with a 16mm socket. Use and jack and raise the transmission up to clear the cross member. **See Photo 4.**



Photo 3



Photo 4

5. Remove the two bolts that hold the gas tank skid to the cross member with a 18mm socket. **See Photo 5.**
6. Use a 18mm socket and wrench to remove the four bolts holding the cross member to the frame. **See Photo 6.** Remove the cross member from the jeep.



Photo 5



Photo 6

7. Place the new cross member into the frame pockets and tighten using factory bolts and a 18mm socket and wrench.
8. Insert 2 of the new supplied flag nuts with factory bolts and attach the gas tank skid to the new cross member. **See Photo 7.** Tighten with a 18mm socket.
9. Hold the transfer case skid into place and mark the edge, trim the edge so the skid plate will fit flush. **See Photo 8.** Install the four factory bolts and flag nuts. Install the front skid with the three factory bolts and one flag nut. Tighten with a 18mm socket.

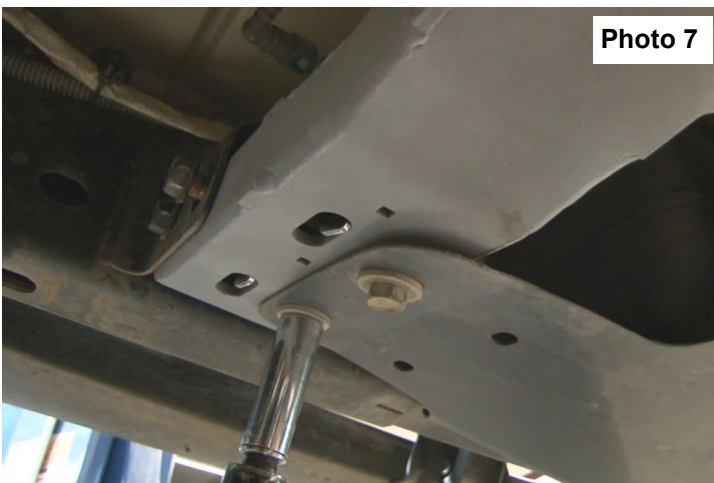


Photo 7



Photo 8